

Osaka-bay Ship's Navigation Support Council

For the better use of the coastal area,
we are offering the information on fishing operation,
AIS-superimposed radar picture of Osaka-Bay area,
and other maritime information.

Current status of Osaka-bay

Osaka-bay is a significant waters and one of the congested sea-traffic area in Japan. The great number of vessels from all over the world is coming and going in this area, that supports national economy. Also, as Osaka-bay is rich in fishery resources, various fishing boats are actively operated in this area.

These days, Osaka-bay has established various policies to make it competitive enough in the world; for example, Super-Hub Port Initiative, the project of unifying some ports in Osaka-bay, and so on.

This situation has encouraged many companies to built more factories along the bay area. As a result, it is expected that the number of large vessels which visit Osaka-bay continue to increase.

For the better use of Osaka-bay

It is essential to strike a balance between the safety and efficiency in order to properly control the traffic in the situation of vessel's congestion. To achieve this aim, Osaka-bay Ship's Navigation Support Council was established and started its operation to provide information in January, 2009.

The council provides information for vessels and fishing boats to help them to operate safely, and is trying to be an information center on this bay area's situation so as to make Osaka-bay more prosperous.

※Our council was awarded the Japan Port & Harbor Association's Planning Prize in 19 May 2010.

About Osaka-bay Ship's Navigation Support Council

Foundation: 1. APR. 2009

Mission: Gathering and providing information on Osaka-bay area to exchange them between any sections concerned.

Organization

It is the conglomerate that consists of various port users such as coastwise shipping company, ocean-going shipping company, pilot association, fisheries organization, port authority, airport, and so on.

These groups which stand on the different background collaborate with each other to gather and provide information on the Osaka-bay area's situation, the ship's navigation support information.

Content of service

- Plotting the fishing boats without AIS and fishing net
- Superimposing AIS picture on radar picture of Osaka-bay
- Others

◎Today, no other organization but Osaka-Bay Ship's Navigation Support Council provides the above for free.

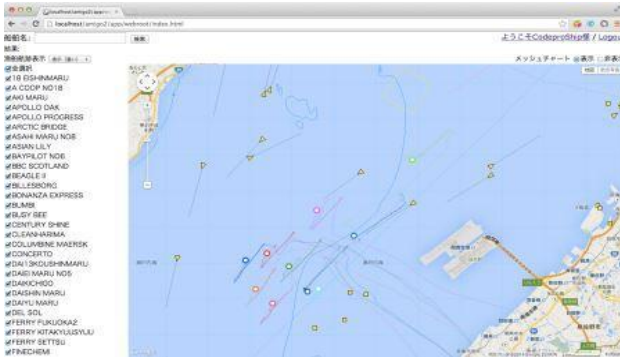
◎Anyone who need the information can get it on the website. Also, mobile website is available for anyone who is on the vessel navigating at sea.

Samples of our service

OFishing Operation Information (ver.Jan, ver.Eng)

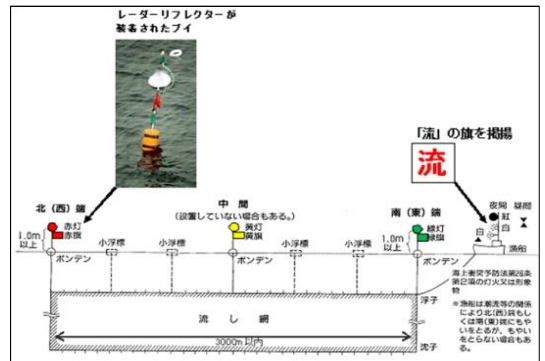
Drift Net situation map

Operation period, time, characteristics and graphical explanation about the Spanish Mackerel Drift Net.



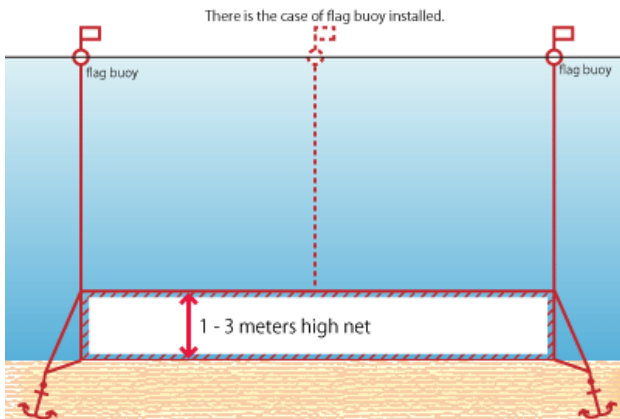
Drift Net overview

Operation period, time, characteristics and graphical explanation about the Spanish Mackerel Drift Net.



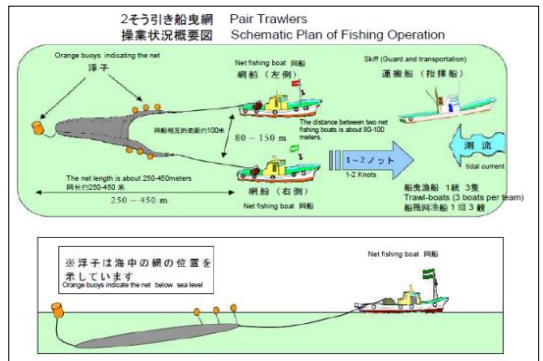
Gill Net overview

Operation period, time, characteristics and graphical explanation about the Gill Net.



Pair Trawlers overview

Operation period, time, characteristics and graphical explanation about the Pair Trawlers.



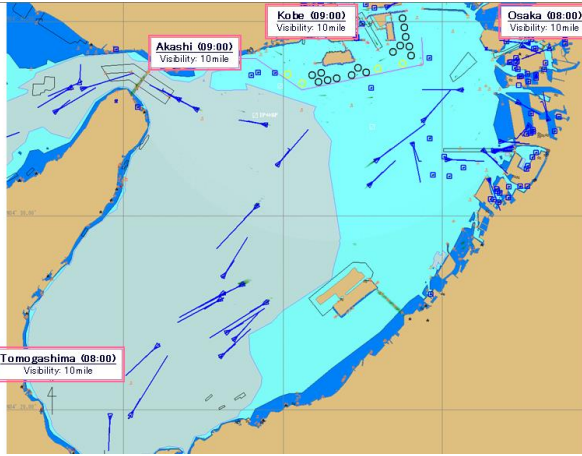
○Radar picture of whole Osaka bay & Visibility information

①Radar picture

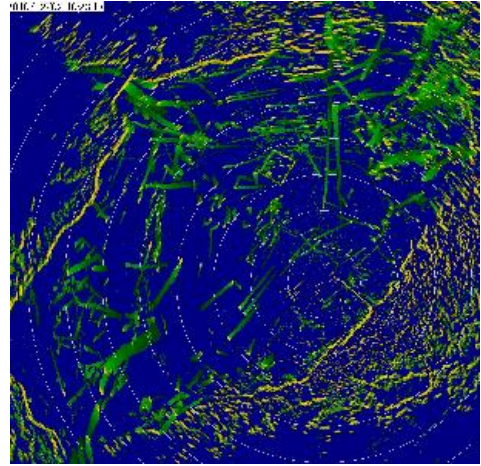
- AIS-superimposed picture of whole Osaka-Bay of Kobe radar station (Updated every 10min.)
- Radar picture of whole Osaka-Bay of Kansai International Airport Radar station (Updated every 5 min.)

②Visibility information (Updated occasionally with change.)

~acquired by the vessels navigating the area in question at the time ~



Kobe Radar Station



Kansai International Airport Radar Station

○Maritime Hazard information Mail Service (in Osaka bay)

- Tsunami Warnings / Advisories
- Warning message against Typhoon at port of Kobe,AmagasakiNishinomiyaAshiya
- Warning message against Typhoon at port of Osaka, SakaiSemboku, Hannan
- Navigation restriction at Akashi strait

How to use our information

Our service is available from our website.

User registration is necessary for using them, but registration fee is not required. (All is free of charge but communication cost)

When you have completed a registration procedure, you are automatically registered as an associate member, and you will be able to access information such as fishing operation maps.

Web information

- PC Website
<http://www.unkousupport.com/>
- Mobile Website
<http://www.unkousupport.com/mobile/>

Voice information:

- Port radio (Osaka, Amagasaki, Kobe and Sakai)
VHF ch16·11·18·19·20
- Phone Osaka, Amagasaki, Sakai Port Radio
: +81-6-6615-7071
Kobe Port Radio : +81-78-303-1711

Registration procedure

1.Input your personal information



2.Read our terms of service



3.Your ID and password are Issued

About Us (In Mar. 31, 2016)

1. Name Osaka-bay Ship's Navigation Support Council
2. Found in Apr. 1st, 2009
3. Minister Tetsuo Abe (City Line MEIMON-TAIYO Ferry)

4. Member

(1) Full member

<Marine related company>

Osaka Bay pilot's association / Osaka-Fu Tug Boat Association / Domestic Tanker Association of Kansai international Airport / Hanshin-Okinawa Kouro Kyoudou Unkou / Osaka Kaiun Association / Japan Dredging and Reclamation Engineering Association / Kinkitiku Sekizai Cooperative / Osaka Port Promotion Association / Kobe Port Promotion Association / Service Center of Port Engineering / Toa Corporation (Osaka Branch)

<Fishing organization>

Osaka Prefecture fishery cooperative federation / Hyogo prefectural federation of fisheries cooperative associations

<Maritime company>

Kawasaki Kisen Kaisha, Ltd. (Kansai Branch) / Kansai Kisen Kaisha / Mitsui O.S.K Lines, Ltd. (Osaka Branch) / Orange Ferry / Nippon Yusen Kabushiki Kaisha (NYK LINE, Kansai Branch) / Diamond-Ferry Co., Ltd Hankyu-Ferry Co., Ltd / Miyazaki Car Ferry Co., Ltd / City Line MEIMON-TAIYO Ferry / Chateau Marine Survey Co., Ltd / TST Corporation / MOL Marine., Ltd / Hayakoma Unyu group / Japan Marine Science Inc

<Local government>

Port and Harbor Bureau Osaka Prefectural Government / Public Works Bureau, Hyogo Prefectural Government / Port & Harbor Bureau, City of Osaka / Port & Harbor Bureau, Kobe city Government

<Infrastructure company>

NPO. Osakafu-Kaiiki-bika-anzen-kyokai/Osaka Bay Regional Offshore Environmental Improvement Center / Kobe-Osaka International port Corporation(Osaka Port Corp/Kobe Port Terminal Corp)

(2) Special Member

Osaka Ferry Association / Kinki District Transport Bureau, Ministry of Land, Infrastructure, Transport and Tourism / Kinki Regional Development Bureau, Ministry of Land, Infrastructure and Transport and Tourism

(3) Supporting-Member

Mr. Katsumi Kanda

Membership subscription

Our council is running on the membership due.

In order to make the Osaka-Bay more convenient, prosperous and safer area, we are always welcome and open for anyone who is concerned to Osaka-Bay's future to join in as our Full-Member.

Contact us if you are interested in.

Full-Member: Membership due ¥50,000 per 1 unit / at least 2 units

Supporting-Member: Membership due ¥10,000 per 1 unit / at least 5 units

Contact us: ☎559-0032 Osaka ferry association

2-2-24 nanko-minami suminoe ward, Osaka-city

TEL +81-6-6612-0763/ FAX +81-6-6612-2211

E-mail osakabay@unkosupport.com

Osaka-bay Ship's Navigation Support Council

〒559-0032 Osaka ferry association

2-2-24 nanko-minami suminoe ward, Osaka-city

TEL +81-6-6612-0763/ FAX +81-6-6612-2211

E-mail osakabay@unkousupport.com

URL <http://www.unkousupport.com/>